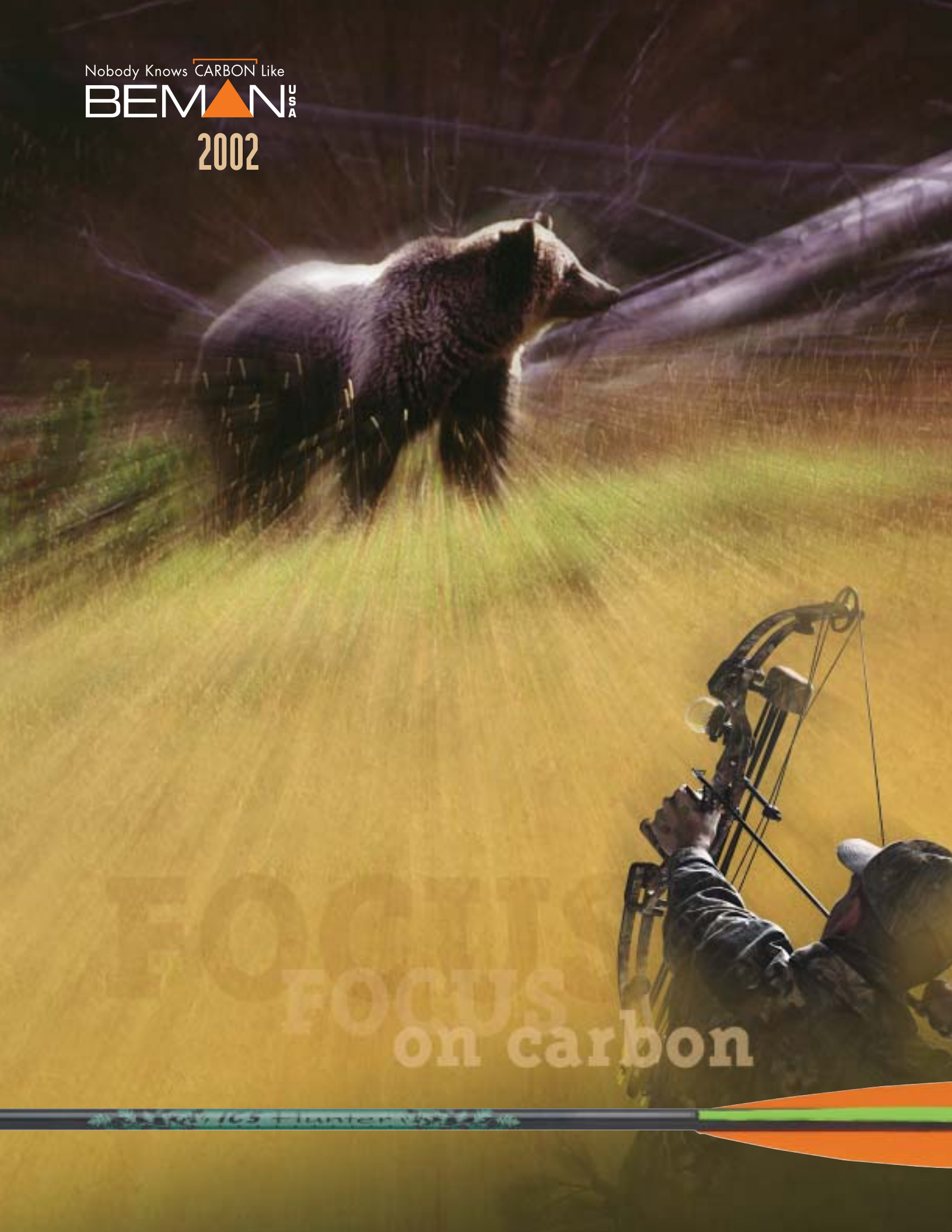


Nobody Knows CARBON Like
BEMAN USA
2002



FOCUS
on carbon

2002/165 Hunter USA



BEMAN FOCUS

At Beman the FOCUS is, and has always been, on carbon arrow systems.

Our engineers are continually designing, developing and perfecting our processes to provide archers and bowhunters with the most advanced carbon arrow technology in the industry. Our manufacturing team follows precise and proven guidelines to achieve consistent straightness, durability and precision in every carbon arrow system we produce. Our highly trained and knowledgeable technical experts are available to answer your questions and provide current, accurate technical support.

Yes, there are other companies out there selling carbon arrows – along with their tree stands, broadheads and miscellaneous camping supplies and equipment. When you make your next carbon arrow purchase ask yourself these questions: Do they care as much as Beman does about your bowhunting success? Have they focused on carbon arrow technology as only Beman has? We say no. What do you say?



Focused on Technology

NOBODY KNOWS CARBON LIKE BEMAN

You know the commitment it takes to prepare yourself for a big hunt. You plan for months, scouting to find the location that "feels right." You understand that hunting with a bow requires skill that can only be developed with practice and patience – so you practice, a lot. You fine tune, because the last thing you want is to have an equipment malfunction. And that's why your arrow choice is Beman.

We are bowhunters and target archers, just like you – and we continue to set the standard that others try to match. Only Beman offers such an exciting variety of options to best suit your needs.

Our Internal Component Systems (ICS) are state-of-the-art, designed to meet the rigorous demands of bowhunters, recreational shooters and 3D tournament archers alike. Our Uni-directional Carbon System is where it all began. With the most consistent wall thickness and spine tolerance in the industry, you can rest assured that Beman carbon will make it happen – with every shot.

From our ICS Hunter, the proven number-one carbon hunting arrow, to the new economical ICS Venture, to our high-strength Carbonmetal Matrix, promising ultimate performance in composite arrow design and technology, there is a Beman shaft perfect for every archer. The ICS Camo Hunter Plus, with our new Infinity Protection System means the camo is there to stay. The Hawk returns by popular demand. Plus, we've added our new ICS Thunderbolt crossbow bolt, designed and manufactured to perform at the same level as today's high-performance crossbows.

Beman USA is still the only composite arrow manufacturing company that is ISO 9001-certified. What does that mean to you? The absolute highest level of quality from the company that knows carbon – Beman.



FOCUS
on carbon

Nobody Knows CARBON Like
BEMAN USA

CARBONMETAL MATRIX

Layers of Beman carbon fiber are bonded to a precision-made aluminum tube and processed to provide the ultimate in weight, spine and performance



The precise inside diameter of the aluminum inner core allows points and nocks to fit perfectly inside and perfectly flush with the outside

Beman's exclusive bonding process brings two proven materials together as one

ICS CAMO COMPOSITE

The PhotoFusion camo finish provides weight consistency and ultimate concealment

Longitudinal uni-directional carbon fiber



Longitudinal uni-directional carbon fiber - manufactured for precise component fit

Infinity Protection System for extended camo wear

High-strength composite fibers for better mass and exceptional durability



Carbonmetal Technology

CARBONMETAL MATRIX

Carbonmetal Matrix is the ultimate combination of straightness and durability – with the fusion of multi-layer carbon and high-strength alloy. It's a fact – there's nothing straighter or more precise than an aluminum shaft. With the benefits of durability, speed and flat trajectory found in carbon, it is the perfect marriage.

Nocks and points fit perfectly in the precise inside diameter of the aluminum inner core and flush with the outside. A 20% longer RPS Insert provides more bonding strength to the shaft, and the Super Nock fits directly into the shaft for more precise nock alignment. The heavier weight of the Carbonmetal Matrix provides more kinetic energy and more punch downrange.

Matrix 460 8.8 grains/inch	Matrix 400 9.5 grains/inch	Matrix 340 10.4 grains/inch	Matrix 300 11 grains/inch
--------------------------------------	--------------------------------------	---------------------------------------	-------------------------------------



Beman PhotoFusion Camo

NEW ICS CAMO HUNTER PLUS

ICS Camo Hunter's Mossy Oak Break-Up PhotoFusion camo finish, with our Infinity Protection System, is improved for better wear. The beautiful detail to the enhanced 2002 Break-Up camo pattern, coupled with superior weight and accuracy, make ICS Camo Hunter Plus the arrow you can count on for all your bowhunting challenges.

For extremely tight weight uniformity, quieter draw across the rest and extreme durability and accuracy, take aim with Beman ICS Camo Hunter. Camo Hunter's heavier weight carries more kinetic energy downrange, putting you right on target.

ICS Camo Hunter 500 7.9 grains/inch	ICS Camo Hunter 400 9.1 grains/inch	ICS Camo Hunter 340 10.0 grains/inch	ICS Camo Hunter 300 10.1 grains/inch
---	---	--	--

INFINITY PROTECTION SYSTEM

After 200 shots with our ICS Camo Hunter Plus into an extremely high-density target, our PhotoFusion camo looks like new, thanks to Beman's new Infinity Protection System. Our new process guards against the abrasive wear caused by repeated shots into all target materials. You'll give out before our camo does.



Infinity
PROTECTION SYSTEM

<p>◀ Matrix</p>  <p>CB 8-32 RPS Insert 21 gr.</p>	<p>◀ ICS Camo Hunter</p>  <p>CM 8-32 RPS Insert 23 gr.</p>	<p>◀ All ICS System Shafts</p>  <p>Super Nock 13 gr.</p>
--	---	--

Precision-machined RPS Inserts are 20% longer to provide more bonding strength to the shaft and better impact resistance. Direct-fit Super Nocks, made of tough ultrapoly material with double-snap throat, secure the arrow on the string even at extreme angles.



OUR NEW VENTURE

Venture into the great outdoors with outstanding Beman quality, at an exceptionally low price. If your idea of the perfect bowhunting experience includes meat in your freezer at the end of the day, you don't want to shoot an inferior carbon arrow, just because "the price is right." With Venture you get our high standards of straightness and consistency at "the right price."

Beman ICS System

ICS HUNTER

ICS Hunter is Beman's premier arrow and the number-one carbon hunting arrow on the market. Our exclusive patented multi-layer design provides optimum arrow weight for increased kinetic energy, unmatched vibration dampening effect and increased accuracy, durability and consistency. Beman's internal component system allows for easy nock adjustment and perfect alignment. Our micro-smooth finish provides a quiet draw and release.

ICS Hunter 500 7.3 grains/inch	ICS Hunter 400 8.4 grains/inch	ICS Hunter 340 9.3 grains/inch	ICS Hunter 300 9.5 grains/inch
--	--	--	--

NEW ICS VENTURE

With Beman, you can have it all. Our all new Venture represents Beman quality at an excellent value. Our multi-layer design provides optimum arrow weight for increased accuracy and durability. Equipped with factory-installed Super Nocks and precision-machined RPS Point Inserts, Venture is a great arrow for the beginning archer to the seasoned veteran.

ICS Venture 500 7.3 grains/inch	ICS Venture 400 8.4 grains/inch	ICS Venture 340 9.3 grains/inch	ICS Venture 300 9.5 grains/inch
---	---	---	---

ICS HAWK

Our versatile, high performance carbon arrow at an exceptionally affordable price is back by popular demand. ICS Hawk is an excellent choice for 3D and field archery, and is also a great carbon hunting arrow. With Beman's recognized internal component system, with Super Nocks factory installed and precision-machined RPS Point Inserts included, you are ensured convenient and precise component installation.

ICS Hawk 500 7.1 grains/inch	ICS Hawk 400 8.1 grains/inch	ICS Hawk 340 8.8 grains/inch
--	--	--

ICS Hunter, ICS Venture, ICS Hawk



CB 8-32 RPS Insert
21 gr.

All ICS System Shafts

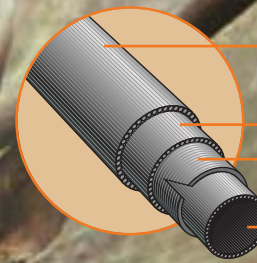


Super Nock
13 gr.

Beman arrows come complete with components that meet the same quality standards as our shafts. From end to end, Beman arrows are equipped with the most precision-fit, weight-balanced inserts and nocks on the market.



ICS COMPOSITE

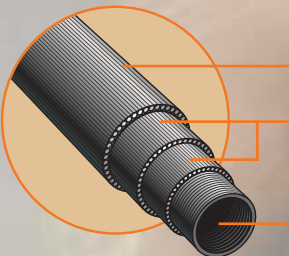


Micro smooth finish stays clean and dust free and pulls easier from targets

High strength composite fiber for better mass, exceptional durability

Longitudinal uni-directional carbon fiber – manufactured for precise component fit

ICS HAWK



Micro smooth finish for reduced wear on the arrow-rest and easy removal from targets

Uni-directional overlays

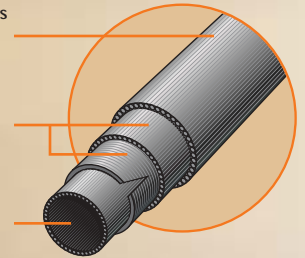
Radial core

ICS THUNDERBOLT CARBON

Micro smooth finish stays clean and dust free and pulls easily from targets

High strength composite fiber for better mass, exceptional durability

Longitudinal uni-directional carbon fiber – manufactured for precise component fit



CARBON SYSTEMS

Other pultruded all-carbon shaft wall thicknesses are inconsistent.

Beman's wall thickness is consistent and accurate.





NEW ICS System Crossbow Bolt

ICS THUNDERBOLT

The new Thunderbolt crossbow bolt is designed and manufactured to perform at the same level as the new, higher performance crossbows on the market today. With a more precise, tighter weight tolerance, ICS Thunderbolt offers unparalleled spine consistency and superior durability.

OD 22/64" length-diameter	20"-22	22"-22
grains/inch	10.5	10.5



Beman Carbon Systems

CARBON HUNTER

The Carbon Hunter provides consistent wall thickness and spine tolerance, for the same exceptional performance with every arrow.

OD 15/64" spine-diameter	530-15	490-15	470-15	
grains/inch	7.5	8.3	8.3	
OD 16/64" spine-diameter	400-16	380-16	360-16	330-16
grains/inch	8.7	9.3	9.7	9.7

CARBON CLUB

You can't beat Carbon Club for versatility. Durable construction and a wide variety of sizes make Club a winner for beginner and intermediate archers alike.

OD 13/64" length-diameter	26"-13	27"-13	28"-13
grains/inch	5.5	6.5	6.5
OD 14/64" length-diameter	29"-14		
grains/inch	7.0		



NEW ICS THUNDERBOLT

We applied superior Beman ICS System technology to our new crossbow bolt. As more states are allowing crossbows for hunting, Beman has stepped up to the plate with ICS Thunderbolt, designed to keep pace with the new high-performance crossbows. Equipped with Beman quality aluminum nock and point inserts, Thunderbolt promises the lightning-fast performance you want with the consistency and accuracy you need.



Carbon Hunter, Club

Thunderbolt



Thunderbolt Insert
42.7 gr.



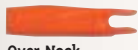
Flatback Insert
36.8 gr.



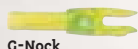
Half Moon Insert
12 gr.



G-Nock Adapter
Size: 13/64 - 9 gr.
Size: 14/64 - 12 gr.
Size: 15/64 - 14 gr.
Size: 16/64 - 16 gr.



Over Nock
Size: 13/64 - 8 gr.
Size: 14/64 - 10 gr.
Size: 15/64 - 13 gr.
Size: 16/64 - 13 gr.



G-Nock
7 gr.

Carbon Hunter



Point Adapter
Size: 15/64 - 35 gr.
Size: 16/64 - 35 gr.



Clue-in Point
Size: 15/64 - 125, 100, 82, 62 gr.
Size: 16/64 - 125, 100, 91, 68 gr.

Carbon Club



Clue-in Point
Size: 13/64 - 54 gr.
Size: 14/64 - 70 gr.



Ralph Cianciarulo, outdoorsman and acclaimed bowhunter, and host of The Archers Choice TV Show, knows the importance of focus and shooting the best carbon arrows out there.

CONGRATULATIONS

You've chosen the very best carbon shafts from the leading name in composite technology for archery. Beman.

Carbon fiber provides a strength-to-weight ratio unlike any other material. Because Beman carbon shafts are considerably lighter than an equivalently spined aluminum shaft, you will immediately pick up more arrow speed.

What about accuracy? With Beman, you're getting the most accurate carbon shaft available. Take a few additional measures to ensure the most from your setup. Make sure you select a quality archery pro-shop to properly cut your shafts. Also, use a slower curing (about 4-hour) epoxy for the inserts. Fast-cure adhesives may get you shooting sooner, but the bond can fracture on target impact and you may lose point inserts. Pick quality fletching, no shorter than four inches (for a consistent-flying bowhunting setup). Unlike other carbon shafts, Beman shafts come very clean from our factory, but it's still advisable to wipe down the last 10 inches of your shaft with a clean cloth and a small amount of denatured alcohol before fletching. Beman shafts also allow you to index or adjust your nocks for perfect vane and arrow rest clearance. And, our larger diameter makes tuning much easier than other carbon designs.

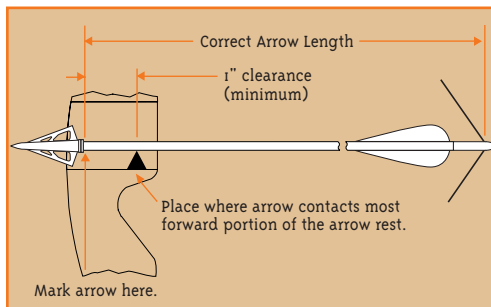
Shaft Selection

SELECTING THE PROPER BEMAN ARROW SHAFT

Determining Correct Arrow Length

The Correct Arrow Length for any type bow (including bows equipped with overdraws) is determined by drawing back an extra-long arrow and having someone mark the arrow one inch in front of where the arrow contacts the arrow rest.

Correct Arrow Length for hunting arrows with broadheads shot from bows with cut-out sight windows (including overdraws).



Correct Arrow Length is measured from the bottom of the nock groove to the end of the shaft for hunting arrows and target/field arrows shot from any bow.

Determining Actual Peak Bow Weight

Actual peak bow weight for recurve bows (measured at your draw length) and compound bows can be determined at your local archery pro shop.

Determining Calculated Peak Bow Weight

The "standard" setup used to determine the suggested shaft sizes is noted on the Beman Hunting and Target Shaft Length Selection Chart. If your setup differs from the standard, use the variables listed below to make adjustments. Add or subtract the appropriate amounts to calculate the effective peak bow weight of your bow. Use this calculated peak bow weight to select your correct arrow size on the CHART.

Variables to the "Standard" Setup:

- Finger release (using compound bow) - Add 5-7 lbs.
- Dacron string - Subtract 3-5 lbs.

Using the Beman Shaft Length Selection Chart

(see back cover)

Once you have determined your correct arrow length and your actual or calculated peak bow weight, you are ready to select your correct shaft size:

1. In the "Bow Weight" area on the right and left-hand sides of the CHART, select the column that best describes the type of bow you shoot.
2. Move across the row in a horizontal direction until you locate the column indicating your correct arrow length. One or more recommended sizes are listed in the "Shaft Size" box located where your actual or calculated peak bow weight row and correct arrow length column intersect.
3. Depending on your shooting requirements, choose a shaft from the various types listed in the box.

All Beman shafts use a spine deflection number to determine size. Spine is measured by hanging a 1.94-pound weight in the center of a 29" shaft to determine deflection (spine). This is why an ICS 500 (.500") is a lighter spine than an ICS 340 (.340").

Reading the Beman Shaft Length Selection Chart

Shaft Model	Club	29	217	Bare Shaft Weight Only (grains)
	Hunter	530	233	
	Hawk	500	220	
	ICSH/V	500	226	
	ICSCS	500	245	
	Matrix	460	273	
		Shaft Sizes		

Safety with Carbon

You need to check your arrows after every shot. A carbon shaft can become damaged from other arrow impacts when shooting tight groups. Without proper inspection, the arrow could fail without warning. Examine your Beman arrows (or any other carbon shaft) after each shot by grasping the shaft at the point and fletching ends. Twist the shaft in opposing directions. If the arrow "relaxes" or twists easily, the carbon has been damaged or stressed and should not be shot again. This simple habit could save you from losing out on precious hunting or shooting time.

Beman takes bowhunting and archery very seriously. Designing and making the world's best carbon composite arrows has been our mission from the beginning. It's our wish that your Beman arrows provide you with the ultimate performance and accuracy for years to come.

Beman recommends wearing safety glasses and a NIOSH-approved dust mask during cutting operations of any arrow shafts.

Trophy Album

SOME GREAT BEMAN SHOTS



Jim Cox



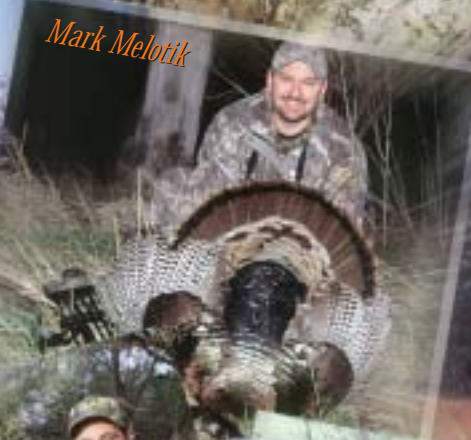
Bob Robb



Paul Reppond



Gary Young



Mark Melotik



Vicki Cianciarulo

Jay Gregory



Mark Drury



Warren Strickland



Todd Amenrud

Guy Haaland



Ron Rette

BEMAN HUNTING AND TARGET SHAFT SELECTION CHART

COMPOUND BOW			22.5" - 23"			23.5" - 24"			24.5" - 25"			25.5" - 26"			26.5" - 27"			27.5" - 28"			28.5" - 29"			29.5" - 30"			30.5" - 31"			31.5" - 32"			RECURVE BOW WEIGHT																																																																																																																																																																																																																																																																																																																																																																																																																																																																																																																																																																																																																																																																																																																																																																																																																																																																																																																																																																																																																																																																																																																																																																																																																																																																																																																																																																																																																																													
Model	Shaft Model	Shaft Size	Shaft Weight	Shaft Model	Shaft Size	Shaft Weight	Shaft Model	Shaft Size	Shaft Weight	Shaft Model	Shaft Size	Shaft Weight	Shaft Model	Shaft Size	Shaft Weight	Shaft Model	Shaft Size	Shaft Weight	Shaft Model	Shaft Size	Shaft Weight	Shaft Model	Shaft Size	Shaft Weight	Shaft Model	Shaft Size	Shaft Weight	Shaft Model	Shaft Size	Shaft Weight	Finger Release																																																																																																																																																																																																																																																																																																																																																																																																																																																																																																																																																																																																																																																																																																																																																																																																																																																																																																																																																																																																																																																																																																																																																																																																																																																																																																																																																																																																																																															
Between 39 lbs. and 45 lbs.	Between 34 lbs. and 40 lbs.	Between 29 lbs. and 35 lbs.	26	127	Club	26	132	Club	26	138	Club	26	143	Club	27	149	Club	27	156	Club	28	163	Club	28	169	Club	29	176	Club	29	182	Club	29	188	Club	29	196	Club	29	203	Club	29	210	Club	29	218	Club	29	224	Club	29	232	Club	29	240	Club	29	248	Club	29	256	Club	29	264	Club	29	272	Club	29	280	Club	29	288	Club	29	296	Club	29	304	Club	29	312	Club	29	320	Club	29	328	Club	29	336	Club	29	344	Club	29	352	Club	29	360	Club	29	368	Club	29	376	Club	29	384	Club	29	392	Club	29	400	Club	29	408	Club	29	416	Club	29	424	Club	29	432	Club	29	440	Club	29	448	Club	29	456	Club	29	464	Club	29	472	Club	29	480	Club	29	488	Club	29	496	Club	29	504	Club	29	512	Club	29	520	Club	29	528	Club	29	536	Club	29	544	Club	29	552	Club	29	560	Club	29	568	Club	29	576	Club	29	584	Club	29	592	Club	29	600	Club	29	608	Club	29	616	Club	29	624	Club	29	632	Club	29	640	Club	29	648	Club	29	656	Club	29	664	Club	29	672	Club	29	680	Club	29	688	Club	29	696	Club	29	704	Club	29	712	Club	29	720	Club	29	728	Club	29	736	Club	29	744	Club	29	752	Club	29	760	Club	29	768	Club	29	776	Club	29	784	Club	29	792	Club	29	800	Club	29	808	Club	29	816	Club	29	824	Club	29	832	Club	29	840	Club	29	848	Club	29	856	Club	29	864	Club	29	872	Club	29	880	Club	29	888	Club	29	896	Club	29	904	Club	29	912	Club	29	920	Club	29	928	Club	29	936	Club	29	944	Club	29	952	Club	29	960	Club	29	968	Club	29	976	Club	29	984	Club	29	992	Club	29	1000	Club	29	1008	Club	29	1016	Club	29	1024	Club	29	1032	Club	29	1040	Club	29	1048	Club	29	1056	Club	29	1064	Club	29	1072	Club	29	1080	Club	29	1088	Club	29	1096	Club	29	1104	Club	29	1112	Club	29	1120	Club	29	1128	Club	29	1136	Club	29	1144	Club	29	1152	Club	29	1160	Club	29	1168	Club	29	1176	Club	29	1184	Club	29	1192	Club	29	1200	Club	29	1208	Club	29	1216	Club	29	1224	Club	29	1232	Club	29	1240	Club	29	1248	Club	29	1256	Club	29	1264	Club	29	1272	Club	29	1280	Club	29	1288	Club	29	1296	Club	29	1304	Club	29	1312	Club	29	1320	Club	29	1328	Club	29	1336	Club	29	1344	Club	29	1352	Club	29	1360	Club	29	1368	Club	29	1376	Club	29	1384	Club	29	1392	Club	29	1400	Club	29	1408	Club	29	1416	Club	29	1424	Club	29	1432	Club	29	1440	Club	29	1448	Club	29	1456	Club	29	1464	Club	29	1472	Club	29	1480	Club	29	1488	Club	29	1496	Club	29	1504	Club	29	1512	Club	29	1520	Club	29	1528	Club	29	1536	Club	29	1544	Club	29	1552	Club	29	1560	Club	29	1568	Club	29	1576	Club	29	1584	Club	29	1592	Club	29	1600	Club	29	1608	Club	29	1616	Club	29	1624	Club	29	1632	Club	29	1640	Club	29	1648	Club	29	1656	Club	29	1664	Club	29	1672	Club	29	1680	Club	29	1688	Club	29	1696	Club	29	1704	Club	29	1712	Club	29	1720	Club	29	1728	Club	29	1736	Club	29	1744	Club	29	1752	Club	29	1760	Club	29	1768	Club	29	1776	Club	29	1784	Club	29	1792	Club	29	1800	Club	29	1808	Club	29	1816	Club	29	1824	Club	29	1832	Club	29	1840	Club	29	1848	Club	29	1856	Club	29	1864	Club	29	1872	Club	29	1880	Club	29	1888	Club	29	1896	Club	29	1904	Club	29	1912	Club	29	1920	Club	29	1928	Club	29	1936	Club	29	1944	Club	29	1952	Club	29	1960	Club	29	1968	Club	29	1976	Club	29	1984	Club	29	1992	Club	29	2000	Club	29	2008	Club	29	2016	Club	29	2024	Club	29	2032	Club	29	2040	Club	29	2048	Club	29	2056	Club	29	2064	Club	29	2072	Club	29	2080	Club	29	2088	Club	29	2096	Club	29	2104	Club	29	2112	Club	29	2120	Club	29	2128	Club	29	2136	Club	29	2144	Club	29	2152	Club	29	2160	Club	29	2168	Club	29	2176	Club	29	2184	Club	29	2192	Club	29	2200	Club	29	2208	Club	29	2216	Club	29	2224	Club	29	2232	Club	29	2240	Club	29	2248	Club	29	2256	Club	29	2264	Club	29	2272	Club	29	2280	Club	29	2288	Club	29	2296	Club	29	2304	Club	29	2312	Club	29	2320	Club	29	2328	Club	29	2336	Club	29	2344	Club	29	2352	Club	29	2360	Club	29	2368	Club	29	2376	Club	29	2384	Club	29	2392	Club	29	2400	Club	29	2408	Club	29	2416	Club	29	2424	Club	29	2432	Club	29	2440	Club	29	2448	Club	29	2456	Club	29	2464	Club	29	2472	Club	29	2480	Club	29	2488	Club	29	2496	Club	29	2504	Club	29	2512	Club	29	2520	Club	29	2528	Club	29	2536	Club	29	2544	Club	29	2552	Club	29	2560	Club	29	2568	Club	29	2576	Club	29	2584	Club	29	2592	Club	29	2600	Club	29	2608	Club	29	2616	Club	29	2624	Club	29	2632	Club	29	2640	Club	29	2648	Club	29	2656	Club	29	2664	Club	29	2672	Club	29	2680	Club	29	2688	Club	29	2696	Club	29	2704	Club	29	2712	Club	29	2720	Club	29	2728	Club	29	2736	Club	29	2744	Club	29	2752	Club	29	2760	Club	29	2768	Club	29	2776	Club	29	2784	Club	29	2792	Club	29	2800	Club	29	2808	Club	29	2816	Club	29	2824	Club	29	2832	Club	29	2840	Club	29	2848	Club	29	2856	Club	29	2864	Club	29	2872	Club	29	2880	Club	29	2888	Club	29	2896	Club	29	2904	Club	29	2912	Club	29	2920	Club	29	2928	Club	29	2936	Club	29	2944	Club	29	2952	Club	29	2960	Club	29	2968	Club	29	2976	Club	29	2984	Club	29	2992	Club	29	3000	Club	29	3008	Club	29	3016	Club	29	3024	Club	29	3032	Club	29	3040	Club	29	3048	Club	29	3056	Club	29	3064	Club	29	3072	Club	29	3080	Club	29	3088	Club	29	3096	Club	29	3104	Club	29	3112	Club	29	3120	Club	29	3128	Club	29	3136	Club	29	3144	Club	29	3152	Club	29	3160	Club	29	3168	Club	29	3176	Club	29	3184	Club	29	3192	Club	29	3200	Club	29	3208	Club	29	3216	Club	29	3224	Club	29	3232	Club	29	3240	Club	29	3248	Club	29	3256	Club	29	3264	Club	29	3272	Club	29	3280	Club	29	3288	Club	29	3296	Club	29	3304	Club	29	3312	Club	29	3320	Club	29	3328	Club	29	3336	Club	29	3344	Club	29	3352	Club	29	3360	Club	29	3368	Club	29	3376	Club	29	3384	Club	29	3392	Club	29	3400	Club	29	3408	Club	29	3416	Club	29	3424	Club	29	3432	Club	29	3440	Club	29	3448	Club	29	3456	Club	29	3464	Club	29	3472	Club	29	3480	Club	29	3488	Club	29	3496	Club	29	3504	Club	29	3512	Club	29	3520	Club	29	3528	Club	29	3536	Club	29	3544	Club	29	3552	Club	29	3560	Club	29	3568	Club	29	3576	Club	29	3584	Club	29	3592	Club	29	3600	Club	29	3608	Club	29	3616	Club	29	3624	Club	29	3632	Club	29	3640	Club	29	3648	Club	29	3656	Club	29	3664	Club	29	3672	Club	29	3680	Club	29	3688	Club	29	3696	Club	29	3704	Club	29	3712	Club	29	3720	Club	29	3728	Club	29	3736	Club	29	3744	Club	29	3752	Club	29	3760	Club	29	3768	Club	29	3776	Club	29	3784	Club	29	3792	Club	29	3800	Club	29	3808	Club	29	3816	Club	29	3824	Club	29	3832	Club	29	3840	Club	29	3848	Club	29	3856	Club	29	3864	Club	29	3872	Club	29	3880	Club	